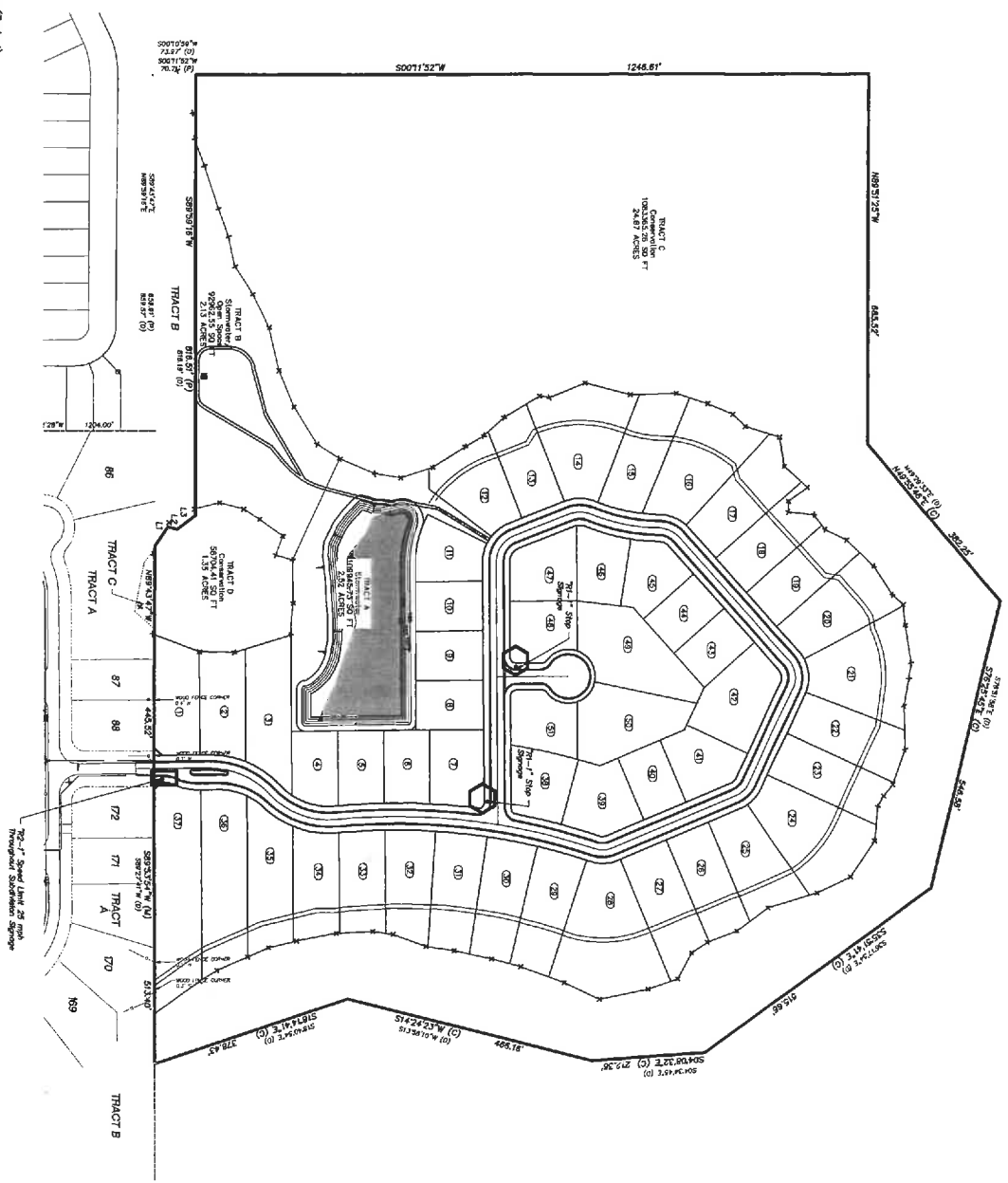


- Speed Limit Throughout Subdivision Sign Location (Typical) (25 mph)
  - Stop Sign Location (Typical)
- 24" Thermoplastic Stop bars shall be provided at all Stop Signs
- Note:  
All street signs shall conform to the City of  
Groundwork requirements.



DATE	REVISION
4/14/14	CIV Comments
10/22/14	CIV Comments
2/10/15	Review to Signic

**Overall Striping/Signage Plan**  
*Marsh Pointe*

**JEC** James Engineering & Consulting, Inc.  
311 N. Main Street  
P.O. Box 508  
St. Charles, MO 63303  
Phone: 636.225.4100  
Fax: 636.225.4101  
www.jecinc.com

Drawn by: JEC  
Checked by: JEC  
Date: 07/17/14